



Schindler 1000

Simple, reliable and compact



Key figures

Capacity	408 & 544 kg
Travel height	Up to 40 m
Stops	Max 16 stops
Speed	0.63 - 1.0 m/s
Drive system	Machine room-less, eco-friendly regenerative drive technology, frequency controlled
Group size	Up to 2 cars
Entrances	One sided
Interior	One interior design line with fresh wall colors

Value for money

Swiss precision, value engineered.

Future ready

Elevators designed to interface with next-generation technologies.

Simply stylish

An attractive, easy-to-combine selection of décor and fixtures for the best match to your building.

Compact design

Minimum space for maximum use.

Value for money

Swiss precision, value engineered

Schindler 1000 is part of Schindler's new product family, a modular platform of high-quality components that deliver smoother, quieter and more reliable performance.



Smooth operation

Schindler 1000 features a gearless drive system with Suspension Traction Media (STM) to ensure efficient operation and long-term availability. Combined with our new, lightweight elevator car and upgraded fixation system, the ride experience for passengers is not only smoother, but quieter, too.



Quality through simplicity

Schindler 1000's standardized components and pre-engineered solutions ensure reliable performance at superior quality standards. This brings benefits throughout the entire life cycle of your elevator: easy maintenance, high availability and minimum downtime.



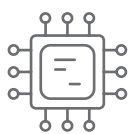
Innovative drive technology

Regenerative drive technology is standard throughout our new modular product family, including Schindler 1000. This reduces travel energy compared to conventional technology.



Environmentally sound

Improving energy efficiency is essential to reduce the environmental impact of elevators and the buildings they serve. Regenerative drive, LED lighting and stand-by mode while parked, are standard eco-friendly features in all Schindler 1000 elevators.



State-of-the-art digital controller

Schindler's scalable (universal) elevator controller offers more flexibility in number of openings, number of stops, and car group size. What's more, Schindler's innovative EPIC absolute positioning system improves both reliability and maintainability.

Future ready

Schindler elevators designed for next-generation technologies

Benefit from our tools, solutions and latest innovations to support you through the entire product life cycle of your elevator. Our elevators are designed to use state-of-the-art technologies from planning to operation.



Innovation in installation

Schindler's new **INEX (Installation Excellence)** method not only reduces construction preparation and resources for our customers, it also improves safety and efficiency on site.



Smart operation – switching to digital

All our new elevators are fully enabled for **Schindler Ahead** – our IoT (Internet of Things) portfolio of services. With Schindler Ahead, we make sure that our customers can step confidently into the digital era.

– Maximize uptime with Ahead Remote Monitoring

With digital connectivity, issues can be detected and addressed well before service is affected. This helps facilities take timely action to minimize or even avoid downtime. Schindler Ahead maximizes uptime thanks to instant, accurate insights.

– Real-time insights with Ahead ActionBoard

Schindler Ahead ActionBoard provides operational, performance and commercial information in real time, giving customers clear, instant oversight of their entire elevator and escalator portfolio.



Navona
Polar White



Navona
Riga Grey

Simply stylish

Our Navona interior design line offers simple, yet refined décor options, keeping planning time and costs down but your artistic expression high.

Navona

Functional and durable

Clarity and comfort in your car with this robust design line. Fresh colors, durable accessories, make Navona an excellent choice for residential applications. Elegant stainless steel option is also available for rear and side walls.



Design your elevator
in minutes

Explore the wide range of combinations available with our easy-to-use online Plan & Design Tool:
india.schindler.com > Home > Products & Solutions > Plan & Design





Navona

Lighting: Round Spots
Ceiling: Stainless Steel Hairline
Walls: Stainless Steel Hairline
Car operating panel: Linea 100
Floor: Rubber Speckled Black

Car operating panels and landing fixtures

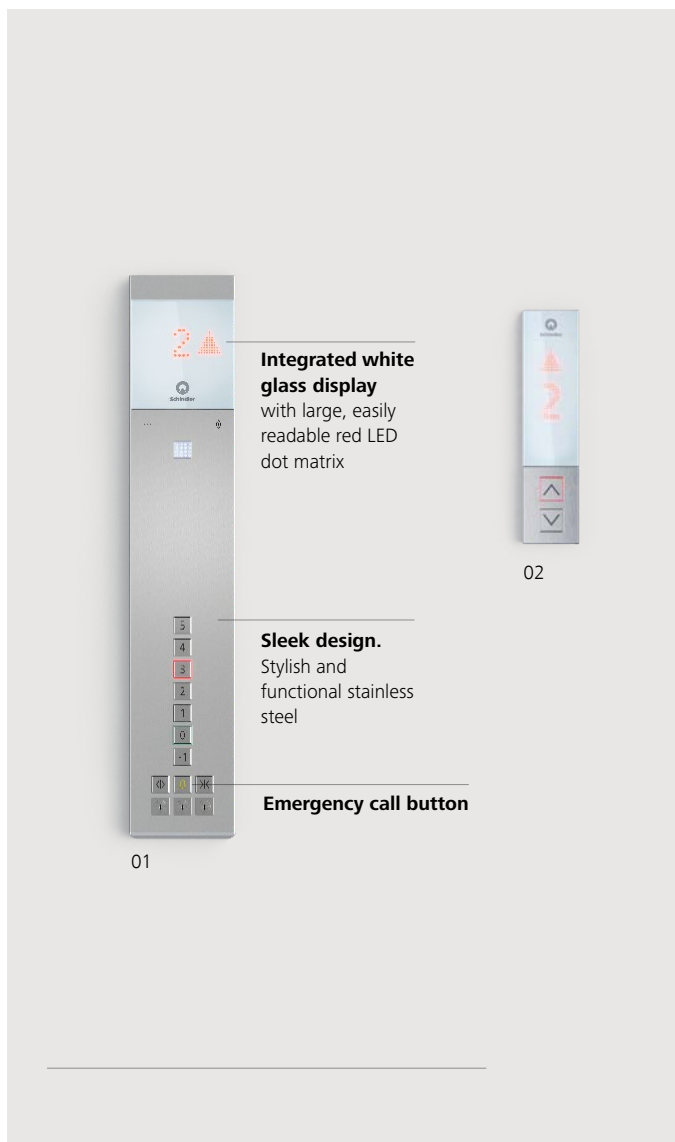
Outfit your elevator with style

Linea 100

Linea 100 offers functional design in stainless steel. The integrated white glass display comes with large, easily readable red LED dot matrix floor indicator. Push buttons have clear red illumination when a call is recognized.

Linea 100 Touch

The convenience of our typical user interface converted to a touch version. The stylish design is in resistant glass with light indication to signal all functions, and dot matrix displays with large, easily readable red LEDs.



01 Half height car operating panel

02 Landing operating panels

01 Car operating panel

02 Car operating panel with key switch

03 Landing operating panels

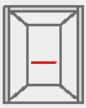
Mirrors and handrails

Spacious and secure

Handrails convey a feeling of security. Schindler stainless steel handrails are designed to blend with car interiors, shapes and textures, and can be mounted to the rear wall.

Mirrors heighten the sense of space, depth and comfort in elevators. Your elevator can be fitted with a half-height safety-glass mirror on the rear wall of the car.

Handrails



The handrails can be mounted on the rear walls. Different handrails can be chosen according to your preference.

Straight



Straight
Stainless Steel Hairline

Straight
Painted Black

Mirrors

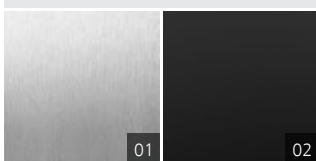
Rear wall



Half height
centered

Navona

Half height centered mirror



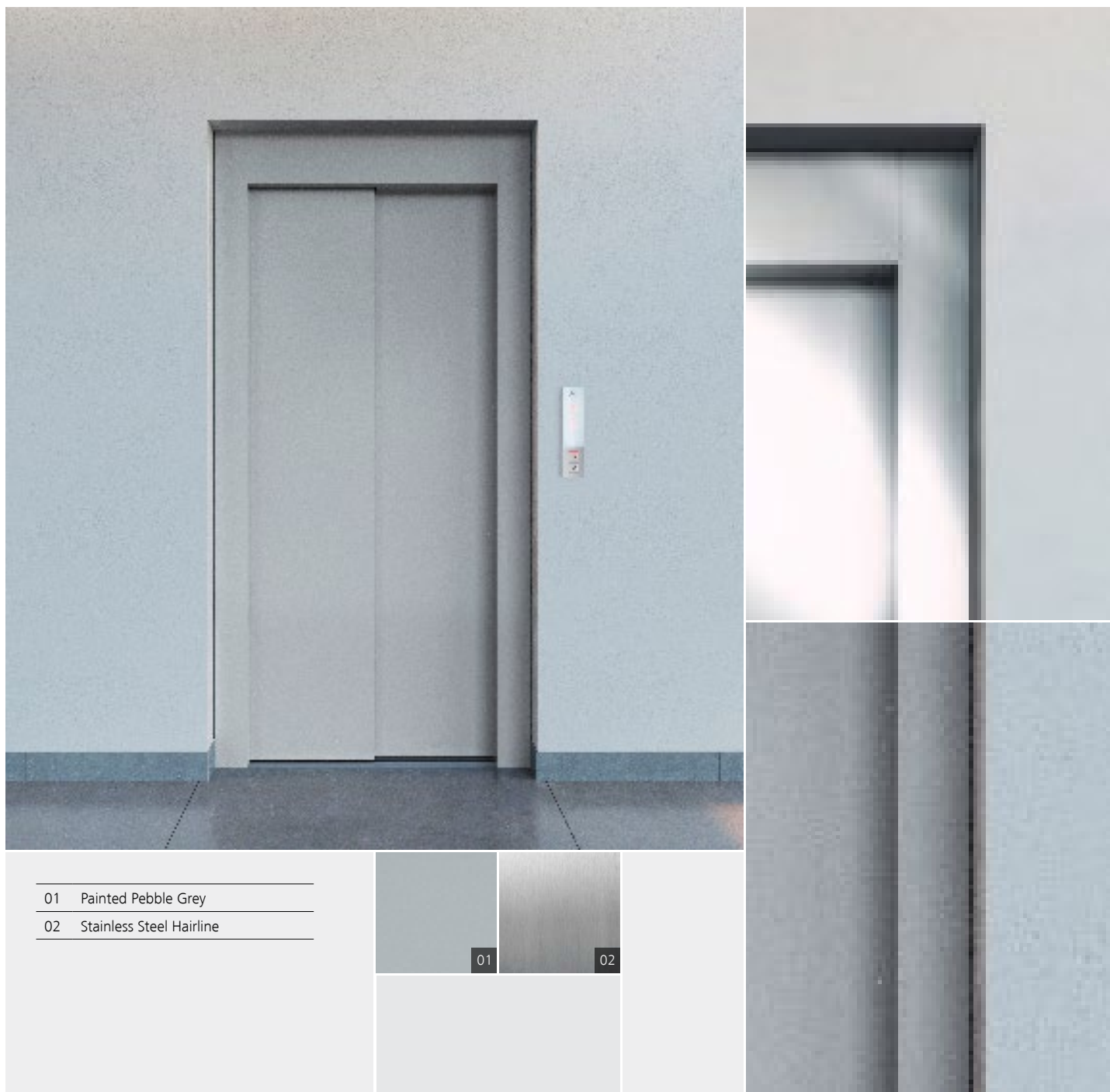
01 Stainless Steel Hairline

02 Painted Black

Landing doors

For a stylish entrance

How your elevator design harmonizes with your building can enhance your tenants' response to the overall décor concept. We offer a range of colors to help you unleash your building's full design potential.



Compact design

Minimum space for maximum use

Schindler 1000 benefits from our MRL (machine-room-less) traction systems and compact door drives to optimize shaft space use, reducing construction costs and leaving space for tenants.



Machine-room-less design

All main components sit in the shaft, saving construction cost and giving architects more space to work with. Schindler 1000 allows a larger car to be fitted into a standard shaft space, with reduced headroom space and pit depth requirements.

Optimised headroom

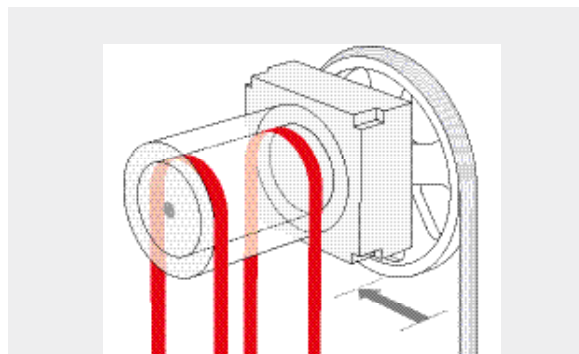
This makes installation highly flexible.

Selection of door sizes depending on your choice of car size

Ensuring adaption to different code and building requirements.

Smaller motor and traction sheave

Suspension Traction Media (STM) saves shaft space and energy by using a smaller motor and sheave.



Built-in inspection and test panel

The inspection and test panel is built directly into a standard door frame. This solution simplifies elevator installation, provides easy access, and saves space.



Planning Data

Technical Elevator Specifications

Machine room-less traction elevator with frequency-controlled drive; 408kg and 544kg, capacity of 6 and 8 passengers

GQ kg	Passengers	VKN m/s	HQ m	ZE	Entrance	Car			Doors			Shaft			
						BK mm	TK mm	HKC mm	Type	BT mm	HT mm	BS# mm	TS# mm	HSG	HSK
408	6	0.63	21	6	1	1000	1100	2100	T2	750	2000	1425	1430	1300	3550
408		1	40*	16*										1300	3580
408	6	0.63	21	6	1	1000	1100	2100	T2	800	2000	1475	1430	1300	3550
408		1	40*	16*										1300	3580
544	8	0.63	27	10	1	1100	1300	2100	T2	800	2000	1540	1630	1300	3550
544		1	40	16										3580	

GQ Capacity
VKN Speed
HQ Travel height
ZE Stops
HE Interfloor distance

BK Car width
TK Car depth
HK Car height

T2 Telescopic door, 2-part
BT Door width
HT Door height

BS Shaft width
TS Shaft depth 1 entrance
HSG Pit depth
HSK Headroom height for safety gear
on counterweight HSK min.+70mm

*Available only if there's another elevator in the same building with fireman operation.

#Tolerances of +/-25mm & +/-40mm will be applicable on BS, TS, HSG & HSK values basis Travel height
Shaft dimensions shown at minimum plumb, building tolerances should be added
Interfloor distance (HE) is min.2600 mm

Corporate Office India

Schindler India Pvt. Ltd.

Schindler House, Main Street, Hiranandani Gardens
Powai, Mumbai - 400076

Schindler Manufacturing Facility

Plot No. D-234, Near Warale Village, Chakan
Phase 2 Road, MIDC Rd, Khed, Maharashtra

Find your local Schindler India office

For additional information please contact your nearest Schindler branch:

Ahmedabad

No. 401-402, 4th Floor
Shivaik Satyamev
Sardar Patel Ring Road
Ahmedabad, Gujarat 380058

Chennai

No. 10-12, Egmore High Road
Tamil Salai, opp. Udipi Home
Egmore, Chennai
Tamil Nadu 600008

Delhi South

Plot No. 5, 704, 7th Floor
Baani Corporate One
District Centre, Jasola
Delhi 110025

Hyderabad

5th floor, B Block
Midtown Building
Rd Number 1
opp. Jalgam Vengal Rao Park
Dwarakapuri, Banjara Hills
Hyderabad, Telangana 500034

Kochi

No. 38/2130- C2, DND Arcade
Anjumana Road, Edappally
Kochi, Kerala 682024

Mangalore

No. 208, 1st Floor, Inland Avenue
MG Road, Kodailbail, Mangaluru
Karnataka 575003

Noida

B-417/20, Pacific Business Park
Plot No-1, Site-IV, Sahibabad, IV
Sahibabad Industrial Estate
Ghaziabad, Uttar Pradesh 201010

Punjab

Plot No 595, 2nd Floor
Phase 9, Industrial Area
Sector 66, Opp Bestech Square
Sahibzada Ajit Singh Nagar
Punjab 160059

Assam

Chandan Nagar, Beltola Tinali
Guwahati, Assam 781028

Coimbatore

56, 2nd Floor, Bharathi Park Cross 2
Saibaba Colony, Coimbatore
Tamil Nadu 641011

Goa

Shop No. S01 and S02
Landscape shire, Caranzalem
Panaji, Goa 403002

Indore

304, Third Floor, NRK Biz Park
Plot No. 397, 405, PU4
Scheme No. 54, Indore
Madhya Pradesh 452010

Kolkata

DN 12, 7th Floor, Sector V
Bidhannagar, Kolkata
West Bengal 700091

Mysore

No. 441, 2nd floor
Dhanalakshmi Plaza
New kantharaja Urs Road
T K Layout, Mysore
Karnataka 570023

Odisha

Plot No N4/345, 4th Floor
IRC village, Nayapalli
Bhubaneswar, Odisha 751015

Raipur

No. 207, 2nd Floor
Lal Ganga Buisness Park,
Pachpedi Naka, Raipur,
Chhattisgarh 492001

Visakhapatnam

No. 50-37-6, 2nd Floor, Sri Sai Enclave
Raja Rammohan Roy Road
Nehru Nagar TPT/VUDA Colony
Jagadamba Junction, Visakhapatnam
Andhra Pradesh 530013

Bangalore 1

No. 785, 3rd Floor
Axis Sai Jyothi, 15th Cross Road
Phase I, Sarakki Extension
100 Ft. Road, J. P. Nagar
Bangalore, Karnataka 560078

Dehradun

No. 64/65, Third Floor, Prabhat House Nari
Ship Mandar Marg
Chakrata road, Dehradun
Uttarakhand 248001

Gurugram

8th Floor, Imperia Mindscape
Golf Course Extension Road
Sector-62, Gurugram
Haryana 122001

Jaipur

Plot No. 128, Mohan Nagar
Gopalpura Bypass
beside Ridhi Sidhi Fly Over
Jaipur, Rajasthan 302019

Lucknow

1st Floor, TC 24
Bhavya Corporate Tower
Vibhuti Khand, Gomti Nagar
Lucknow, Uttar Pradesh 226010

Nagpur

K Rao Complex 3rd Floor
Shubhash Road
opposite Gandhisagar Lake
Nagpur, Maharashtra 440018

Pimpri Chinchwad

No. 1001, 10th Floor
Amar Business Park
Ram Nager, Baner
Pune, Maharashtra 411045

Surat

C - 226, 2nd Floor, Monarch
Gaurav Path, Palgam
Surat, Gujarat 395009

Bangalore 2

No. 600A, 6th Floor
Plama Square, Hennur Main Road
Kalyan Nagar Post, Above D-mart
Hennur, Bangalore
Karnataka 560043

Delhi North

P.P. Trade Center, Plot No. P-1, 301
3rd Floor, Wazirpur Distt Centre Netaji
Subhash Place, Pitampura
New Delhi 110034

Hubli

No. 319, Marvel Artiza
Vidyanagar, opposite KIMS
Hubli, Karnataka 580031

Jharkhand

No. 170, 2nd Floor
Harsh Complex, Tagore Hill Road
Morabadi, above Bank of India
Ranchi, Jharkhand 834008

Ludhiana

Sethi square, SCO No 107
First Floor, Phase 1, Urban estate dugri
Ludhiana, Punjab 141002

Navi Mumbai

Plot No-05, 1803-1806
Kesar Solitaire, Palm Beach Rd
Sector 19, Sanpada, Navi Mumbai
Maharashtra 400705

Pune

No. 1001 and 1002, 10th Floor
Vikram Monarch, University Rd
Modimbaug, Model Colony
Shivajinagar Pune,
Maharashtra 411016

Vijayawada

551-A, 1-B
3rd Floor, bearing Door No 40
Chandramoulipuram Tickle Road,
Vijayawada, Andhra Pradesh 520010

Other Locations in India

Tirupati | Madurai | Gulbarga | Solapur | Jodhpur | Bhiwandi | Shivmogga | Shimla | Jalandhar | Dhanbad | Jamshedpur
| Jabalpur | Bareilly | Allahabad | Varanasi | Bilaspur | Sonipat | Aurangabad | Agra | Siliguri | Patna | Bhopal | Kanpur |
Faridabad | Amritsar | Jammu | Kolhapur | Vadodara | Rajkot | Kota

Toll free Numbers

1-800-209-5438 | 1-800-202-5438

Email

marketing.in@schindler.com



Scan the QR code
To know more